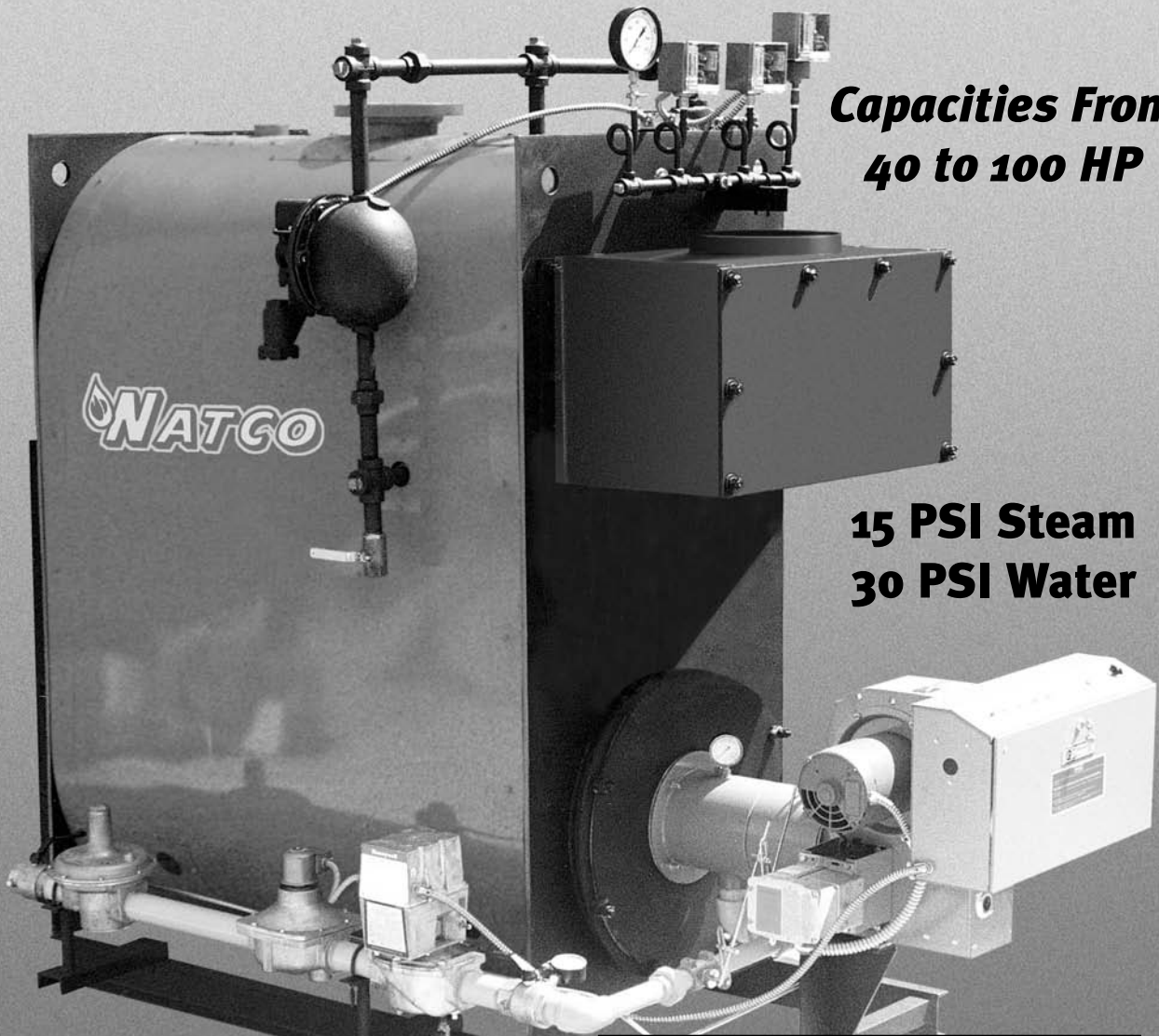


NATGO

SERIES 2000

TANKLESS WATER HEATER STEAM BOILER



**Capacities From
40 to 100 HP**

**15 PSI Steam
30 PSI Water**

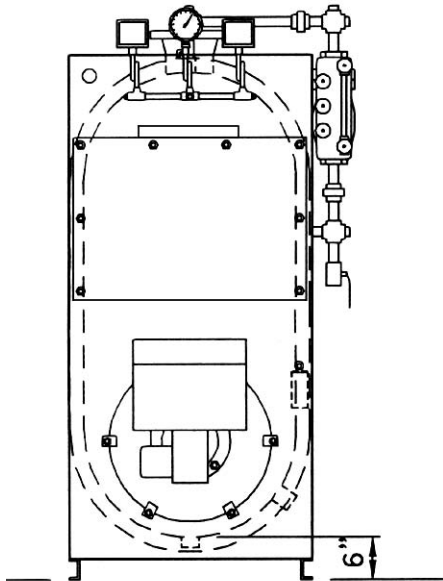
- Concrete Batching Plants
- Block Plants

- Indirect Fired
- Instantaneous
- Tankless
- Scotch Marine
- Forced Draft Fired
- Temperature controlled hot water
- Oil or Gas Fired
- Produces Steam for Aggregate Heating

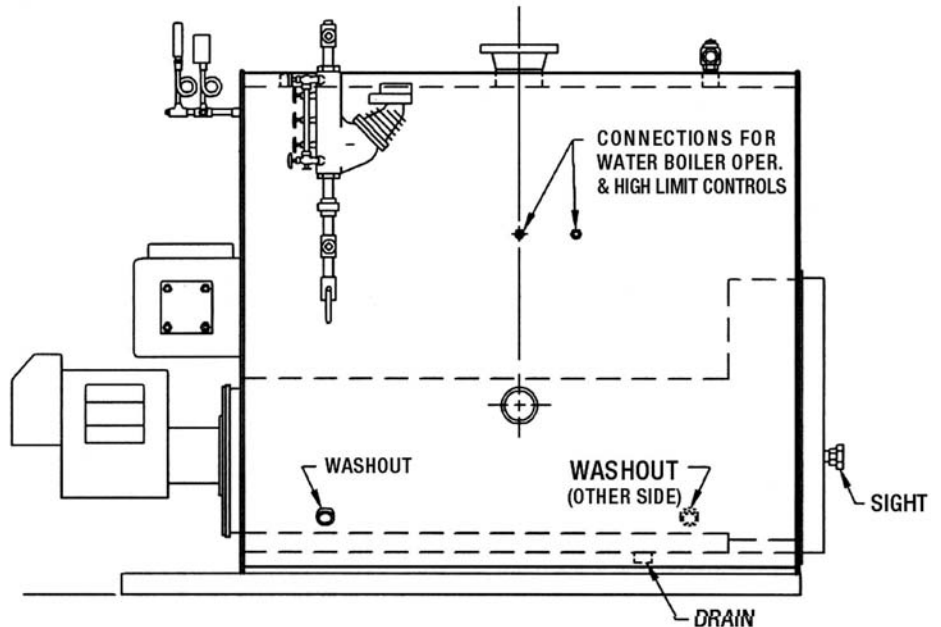
UL APPROVED FORCED DRAFT BOILERS



NATIONAL COMBUSTION CO. INC. 104-11 180th Street, Jamaica, NY 11433
www.nationalcombustion.com • (718) 291-8400 • Fax (718) 291-6870



FRONT VIEW



SIDE VIEW

BOILER SPECIFICATIONS

(ALL DIMENSIONS ARE IN INCHES)

SERIES 2000

BOILER HORSEPOWER	40	50	60	80	100
GALLONS PER HOUR @ 100 DEGREE RISE	1585	1981	2377	3169	3962
GALLONS PER MIN. @ 100 DEGREE RISE CONTINUOUS	26	33	40	53	66
INTERMITTENT DRAW GPM FOR 5 MINUTES 40 TO 140					
STEAM BOILER SET UP GPM	43	49	61	80	100
WATER BOILER SET UP GPM	53	59	73	92	114
FIRING RATE GAS MBTU's	1650	2062	2475	3300	4200
FIRING RATE LIGHT OIL 140,000 BTU'S/GALLON	12	15	18	24	30
WIDTH LESS TRIM	31	31	34.5	34.5	34.5
WIDTH WITH TRIM	38	38	42	42	42
WIDTH WITH GAS TRAIN	46	46	50	50	50
BOILER LENGTH LESS BURNER	74	84	86	108	128
SMOKE BOX DEPTH	13.75	15.75	15.75	15.75	17.75
BOILER LENGTH WITH BURNER (MAX)	110	120	122	149	169
HEIGHT WITH TRIM	85	85	91	91	91
STACK DIAMETER	10	10	12	12	14
TUBE PULL SPACE	50	62	56	68	80
SHIPPING WEIGHT	2897	3387	3815	4445	5140

THE NATCO CONSISTS OF:

- The Boiler with Steam Trim
- Copper Heat Exchanger
- Low-Water Cut-Off
- Pressuretrol
- Quick Vents
- Thermometer
- Mixing Valve
- U.L. approved forced draft oil, gas, or combination burner. If other approvals are necessary, contact NATIONAL COMBUSTION CO. INC.

Water flow rating based on incoming water pressure of 50 to 60 lbs.

Boiler input and output rating are based on a maximum elevation of 2000ft. and must be derated 4% for every additional 1000 ft.

NATIONAL COMBUSTION CO. INC. 104-11 180th Street, Jamaica, NY 11433
www.nationalcombustion.com • (718) 291-8400 • Fax (718) 291-6870